

QUANTOFIX[®] Sulfite

Pack content:

1 aluminum container with 100 test strips

Measuring range:

Visually
10 – 1000 mg/L SO_3^{2-}

Reflectometrically
10 – 500 mg/L SO_3^{2-}

Color gradation:

0 · 10 · 25 · 50 · 100 · 250 · 500 · 1000 mg/L SO_3^{2-}

Hazard warnings:

This test does not contain hazardous substances that must be labelled.

General indications:

Remove only as many test strips as are required. Close the container immediately after removing a strip. Do not touch the test field.

Instructions for use:

1. Dip the test strip into the sample (pH 6–9) for 1 s.
2. Shake off excess liquid.
3. Wait 20 s.
4. Compare the test field with the color scale.

If sulfite ions are present, the test field turns salmon-pink.

Interferences:

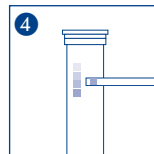
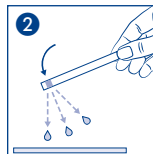
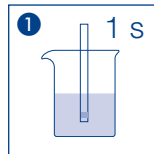
Acidic test solutions (i.e. white wine) must be buffered with solid sodium acetate prior to testing because the test paper does not react in acidic media. Sulfide ions also lead to a red coloration of the test paper in neutral solutions. This interference can be eliminated by adding an excess of nickel(II) ions. The nickel sulphide formed can be removed by filtration. Larger amounts of reducing agents such as hydroxylammonium chloride or ascorbic acid interfere with the determination leading to falsely low test results.

Disposal:

Information regarding disposal can be found in the safety data sheet. You can download the SDS from www.mn-net.com/SDS.

Storage:

Avoid exposing the strips to sunlight and moisture. Keep container cool and dry (storage temperature 4–30 °C). If correctly stored, the test strips may be used until the use-by-date printed on the packaging.



CTL SCIENTIFIC SUPPLY CORP. 1016-3 Grand Boulevard, Deer Park, NY 11729

Tel: 631-242-4249

Web: www.ctlscientific.com

Manufacturer: Macherey-Nagel GmbH & CO. KG

Rev: 2025-03