

QUANTOFIX[®] Sulfate

Pack content:

1 aluminum container with 100 test strips

Measuring range:

200–1600 mg/L SO_4^{2-}

Color gradation:

< 200 · > 400 · > 800 · > 1200 · > 1600 mg/L SO_4^{2-}

General indications:

Remove only as many test strips as are required. Close the container immediately after removing a strip. Do not touch the test fields.

Additional indications:

If the sample solution has a pH value of 4–8, the reaction will take place without interferences. Strongly acid solutions have to be buffered with sodium acetate, and alkaline solutions with tartaric acid.

Instructions for use:

1. Dip the test strip with all test fields into the sample for 1 s.
2. Shake off excess liquid.
3. Wait 120 s.
4. Compare test field with the color scale.

Interferences:

The following ions interfere with the reading only above the indicated concentrations:

> 1000 mg/L BrO_3^- , ClO_3^- , CrO_4^{2-} , SO_3^{2-} , $\text{S}_2\text{O}_3^{2-}$, SeO_3^{2-} ,

> 500 mg/L $\text{S}_2\text{O}_8^{2-}$,

> 100 mg/L CN^- , S_2^- .

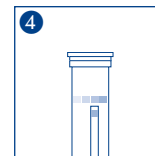
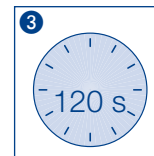
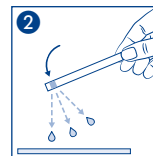
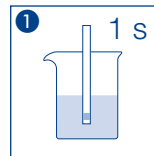
Disposal:

Information regarding disposal can be found in the safety data sheet. You can download the SDS from www.mn-net.com/SDS.

Storage:

Avoid exposing the strips to sunlight and moisture. Keep container cool and dry (storage temperature 4–30 °C).

If correctly stored, the test strips may be used until the use-by-date printed on the packaging.



CTL SCIENTIFIC SUPPLY CORP. 1016-3 Grand Boulevard, Deer Park, NY 11729

Tel: 631-242-4249

Web: www.ctlscientific.com

Manufacturer: Macherey-Nagel GmbH & CO. KG

Rev: 2025-03