

# visicolor® Powder Pillows

Test 7-22

## pH

Reagent for the photometric determination of pH values in drinking water, swimming pools and water reservoirs

### Measuring range:

pH = 6.20–8.20

### Method:

Photometric determination of the pH value using phenol-red as indicator.

### Hazard warning:

Information regarding safety can be found on the box' label and in the safety data sheet. You can download the SDS from [www.mn-net.com/SDS](http://www.mn-net.com/SDS).

### Procedure:

Requisite accessories: 2 test tubes 16 mm OD (REF 91680) or 2 test tubes 24 mm OD (REF 936101)

- 1 Rinse test tube several times with sample

#### Blank (optional):

- 2 Fill one test tube with 5 mL of sample
- 3 Clean test tube
- 4 Place test tube in photometer as blank value and adjust for zero

#### Sample:

- 5 Fill another test tube with 5 mL of sample
- 6 Add content of 1 Powder Pillow pH
- 7 Close test tube and shake well
- 8 Clean test tube
- 9 Measure

### Measurement:

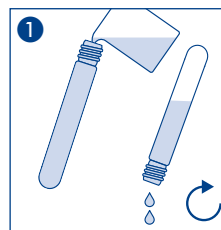
See manual for all MACHEREY-NAGEL photometers.  
After use, rinse out test tubes thoroughly and seal them.  
Suitable for the analysis of sea water.

### Interferences:

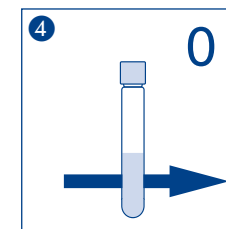
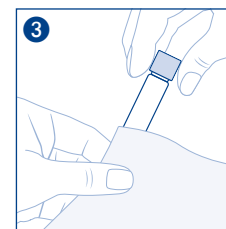
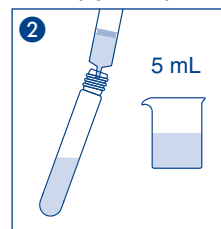
The temperature of the water sample should be between 20 °C and 30 °C.  
The following will not interfere: < 6 mg/L Cl<sub>2</sub>.

### Disposal of samples:

Information regarding disposal can be found in the safety data sheet. You can download the SDS from [www.mn-net.com/SDS](http://www.mn-net.com/SDS).



#### Blank (optional):



#### Sample:

