

Ammonium

Reagent for the photometric determination of Ammonium in surface, ground and drinking water.

Please Note: These instructions apply to products with a shelf life from 10/2027.

Measuring range:

0.02 – 0.80 mg/L NH₄-N (16 mm OD)
 0.01 – 0.50 mg/L NH₄-N (24 mm OD)
 0.03 – 1.00 mg/L NH₄ (16 mm OD)
 0.03 – 0.50 mg/L NH₄ (24 mm OD)

Method:

Photometric determination of ammonium ions via Berthelot reaction.

Hazard warning:

Information regarding safety can be found on the box' label and in the safety data sheet. You can download the SDS from www.mn-net.com/SDS.

Procedure:

Requisite accessories: 2 test tubes 16 mm OD (REF 91680) or 2 test tubes 24 mm OD (REF 936101)

- 1 Rinse test tube several times with sample (*pH value of sample must be between pH 4 and 11*)

Blank (optional):

- 2 Fill one test tube with 5 mL of sample
- 3 Clean test tube
- 4 Place test tube in photometer as blank value and adjust for zero

Sample:

- 5 Add content of 1 Powder Pillow Ammonium
- 6 Fill test tube with 5 mL of sample
- 7 Close test tube and shake well
- 8 Clean test tube
- 9 Wait for 15 min
- 10 Measure

Measurement:

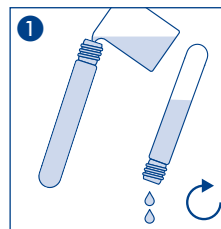
See manual for all MACHEREY-NAGEL photometers.
 After use, rinse out test tubes thoroughly and seal them. Remains of Powder can be dissolved in weakly acidic media.
 Suitable for the analysis of seawater when used with additional reagent (REF 936929).

Interferences:

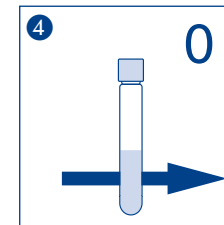
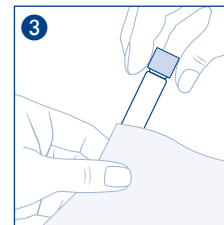
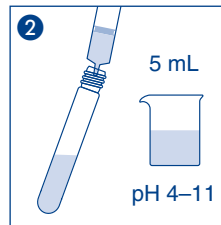
The temperature of the water sample should be between 20 °C and 30 °C.
 The following will not interfere:
 < 1000 mg/L CO₃²⁻; < 300 mg/L SO₄²⁻; < 100 mg/L Ca²⁺, Mg²⁺, NO₃⁻, PO₄³⁻; < 10 mg/L NO₂⁻; < 2 mg/L S²⁻

Disposal of samples:

Information regarding disposal can be found in the safety data sheet. You can download the SDS from www.mn-net.com/SDS.



Blank (optional):



Sample:

